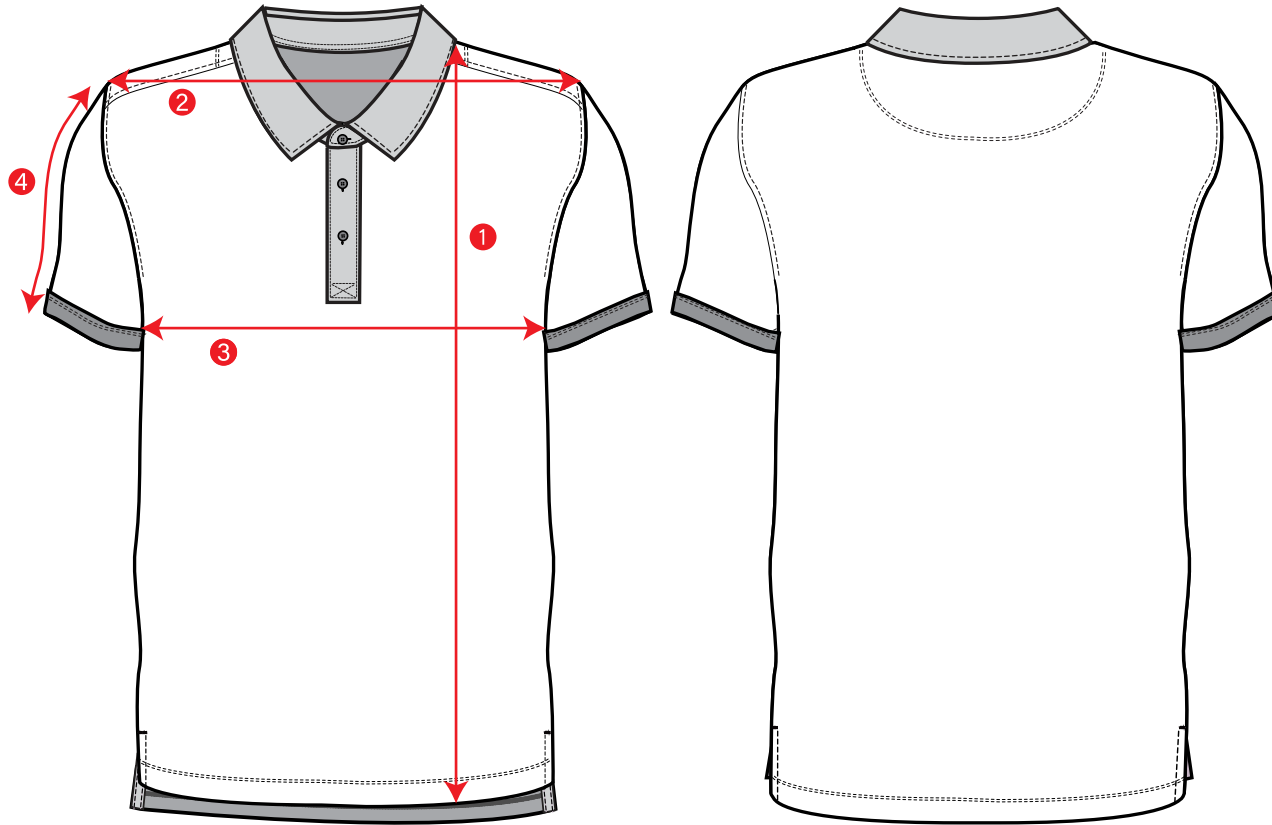


BODY MEASUREMENT		S	M	L	XL	XXL
1 CHEST Measure around the chest, just under the arm & across shoulder blades	cm	86-91	96.5-102	107-112	117-122	127-132
	inches	34-36	38-40	42-44	46-48	50-52



BODY MEASUREMENT		S	M	L	XL	XXL
1 FRONT LENGTH Measure from HPS at neck seam to hem	cm	72	74.3	76	78	80
	inches	28 1/2	29 1/4	30	30 3/4	31 1/2
2 SHOULDER Measure across from shoulder point to shoulder point at shoulder seams	cm	42.5	44.5	46.4	48.3	50.2
	inches	16 3/4	17 1/2	18 1/4	19	19 3/4
3 CHEST Measure across chest 1" below armhole	cm	52	56	59.7	63.5	67.3
	inches	20 1/2	22	23 1/2	25	26 1/2
4 SLEEVE LENGTH Measure from shoulder point at seam to sleeve hem	cm	23	24	25	26.7	28
	inches	9	9 1/2	10	10 1/2	11